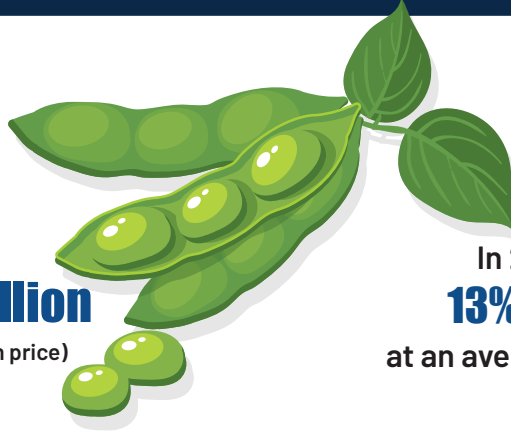




# EXPORTING INDIANA SOYBEANS THROUGH U.S. PORK



In 2022 the market value of pork exports to **Indiana Soybeans = \$104.30 million**

(soybeans consumed by pork exports at average annual soybean price)

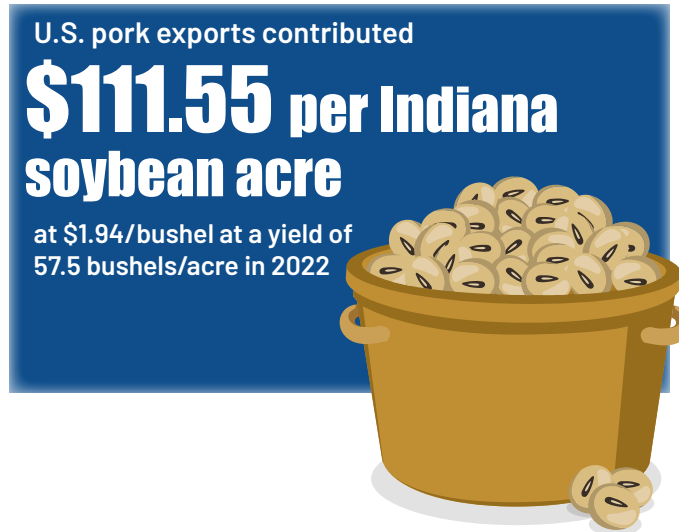
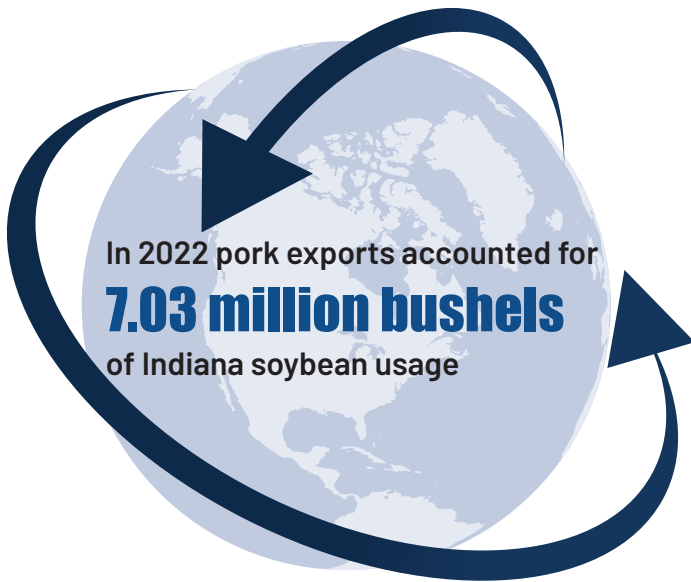
7.03 million bushels x \$14.83 per bushel

For the estimated total economic impact:

In 2022 pork exports contributed

**13% of bushel value = \$1.94**

at an average price of \$14.83 per bushel



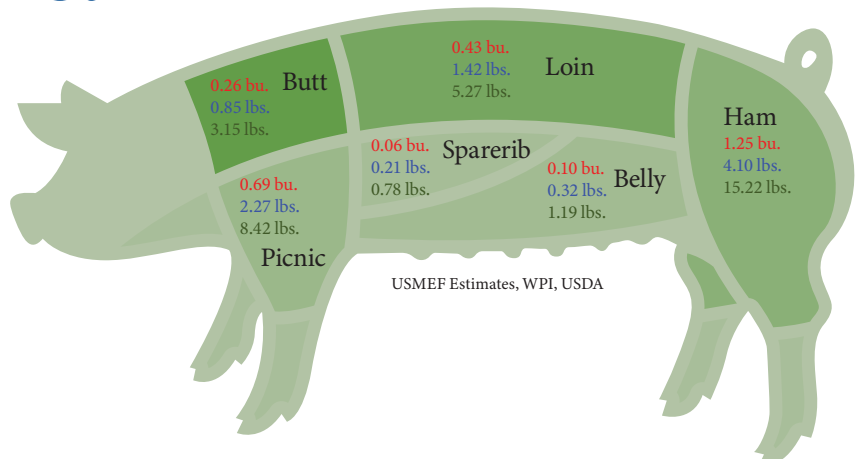
## Feed Use by Cuts Exported

Per head slaughtered in 2022

**Bushels of Corn**

**Lbs. of Dried Distillers Grains**

**Lbs. of Soybean Meal**

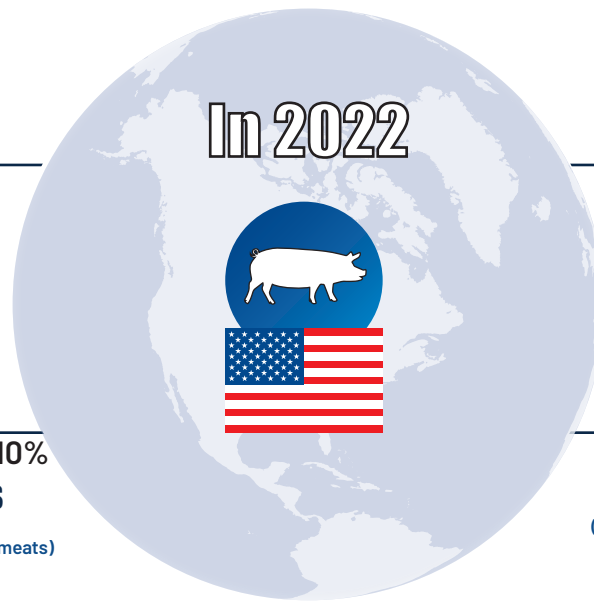




**27.5%**  
of U.S. pork and pork variety  
meat was exported



Pork production increased by 10%  
from 2015, while **pork exports**  
**increased by 25%** (including variety meats)  
during the same time period



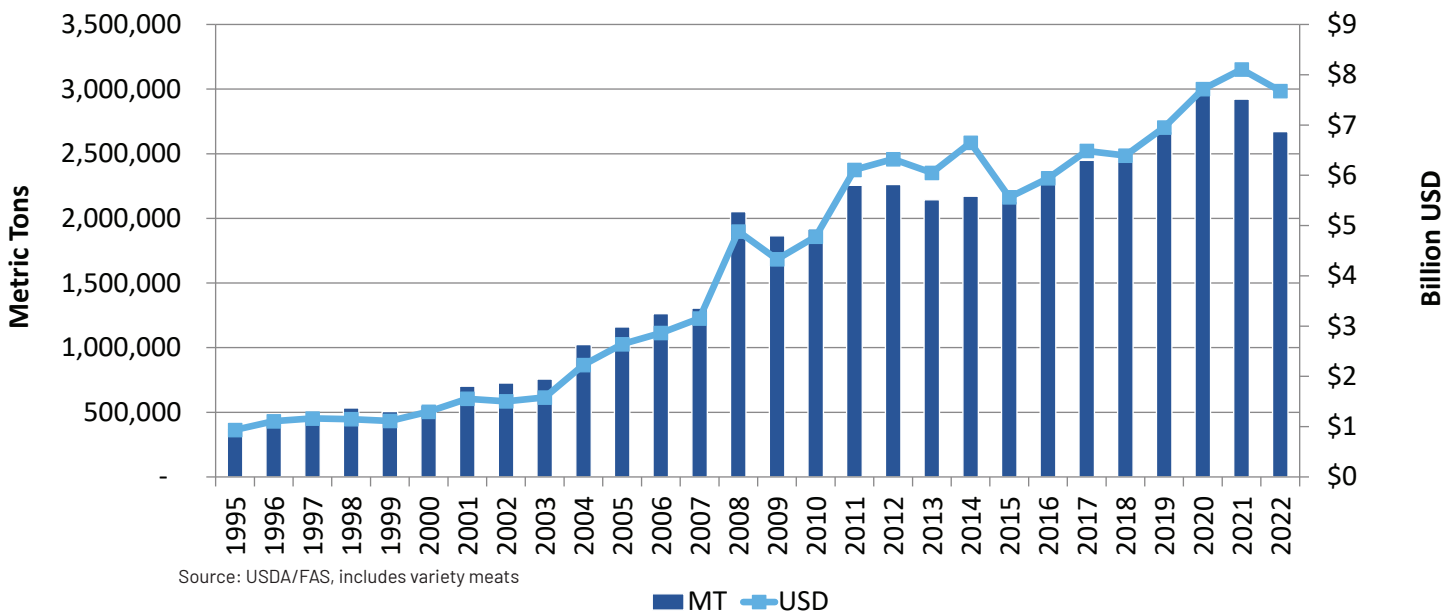
**Pork export volume equated to 47 lbs.**  
per head slaughtered, 9.3 lbs. of  
**which were pork variety meats**  
(export volume divided by 2022 commercial hog slaughter)



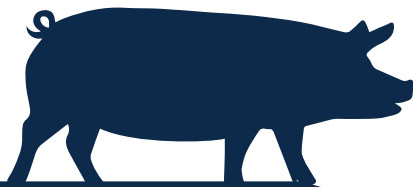
Pork export value equated to  
**\$61.26 per head** slaughtered  
(export value divided by 2022 commercial hog slaughter)

In 2022, pork exports accounted for  
**2.13 million tons** worth of **soybean meal** use, the  
equivalent of 89.7 million bushels of soybeans

## U.S. Pork & Variety Meat Exports



***"The soybean industry has been a solid partner in developing international markets for U.S. pork,"*** says USMEF Senior Vice President of Industry Relations John Hinners.  
***"This support is critical to the export growth the pork industry has achieved."***



**WORLD PERSPECTIVES**  
AS THE MIDDLE OF POLICY & MARKETS  
**Dave Juday**  
dave@thejudaygroup.com

The U.S. Meat Export Federation (USMEF) is a non-profit trade association that works to create new opportunities and develop existing international markets for U.S. beef, pork and lamb. USMEF is a unique collaboration of nine distinct segments of American agriculture, joining together to implement successful marketing programs for U.S. pork, beef and lamb around the world.

**U.S. Meat Export Federation**  
1660 Lincoln Street, Suite 2800  
Denver, CO 80264  
Tel 303.623.MEAT (6328)  
Fax 303.623.0297  
www.usmef.org

